



Initial splash screen: v01



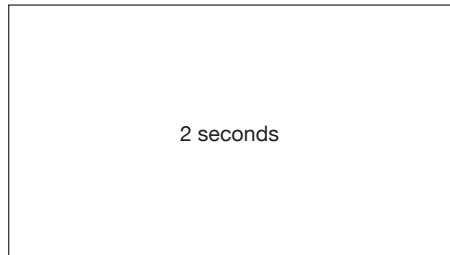
Initial splash screen: v02

or

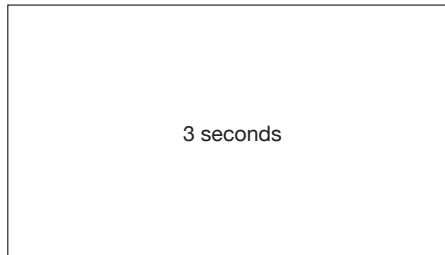
These 2 example screens are seen when viewing your channel or when people are viewing anything searched for 'Head2Toe Physio' or relating subjects.



1 second



2 seconds

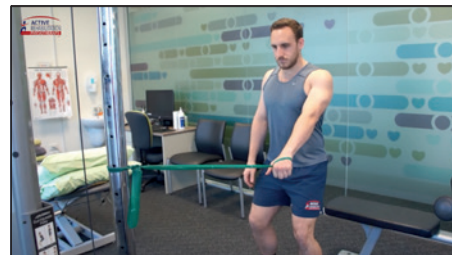


3 seconds



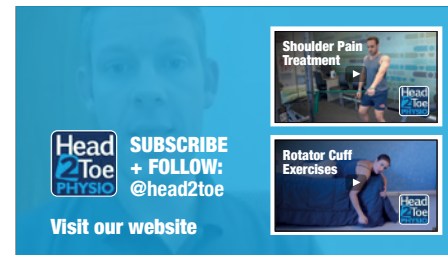
Last screen of video

4 second intro into video guide with audio and animation...



Training Video

>



Once played you can go to this screen



Initial splash screen:

There are different ways this screen can be handled. You could have a Cyan blue screen with logo on and title or do as shown here. This is quite a common way of showing the holding screen.



During video being played:

Whilst video being played it would be good to keep a small logo top left.

I would shoot your video in landscape mode to avoid only seeing a small screen version.

You Tube dimensions:

426 x 240 (240p)

640 x 360 (360p)

854 x 480 (480p)

1280 x 720 (720p),

1920 x 1080 (1080p)

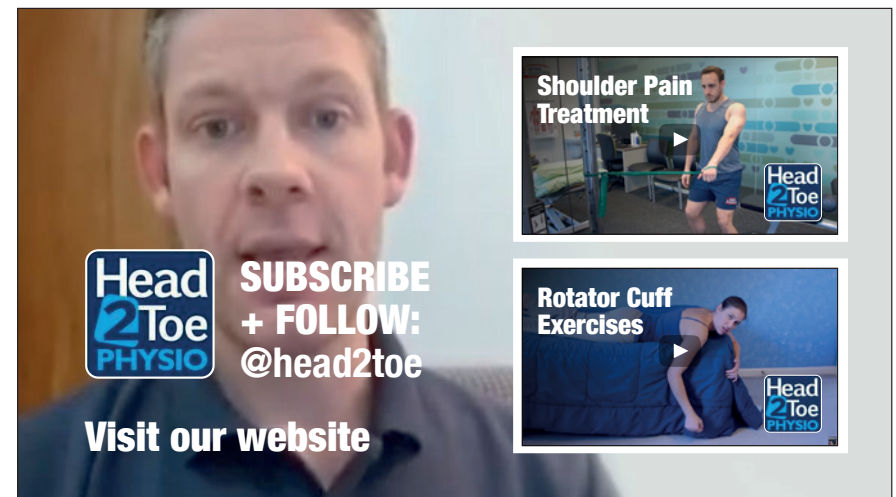
2560 x 1440 (1440p)

3840 x 2160 (2160p).

Minimum dimension is 426 x 240.

Max dimension is 3840 x 2160.

Aspect ratio is 16:9 (auto adds pillarboxing if 4:3).



End frame:

The end frame will have options with what you can do. They would normally have a Subscribe, Contact Us and links to 2 YouTube videos from your channel.